

# FCAC

FOOTSCRAY  
COMMUNITY  
ARTS  
CENTRE



Function  
Package  
2018 - 2019

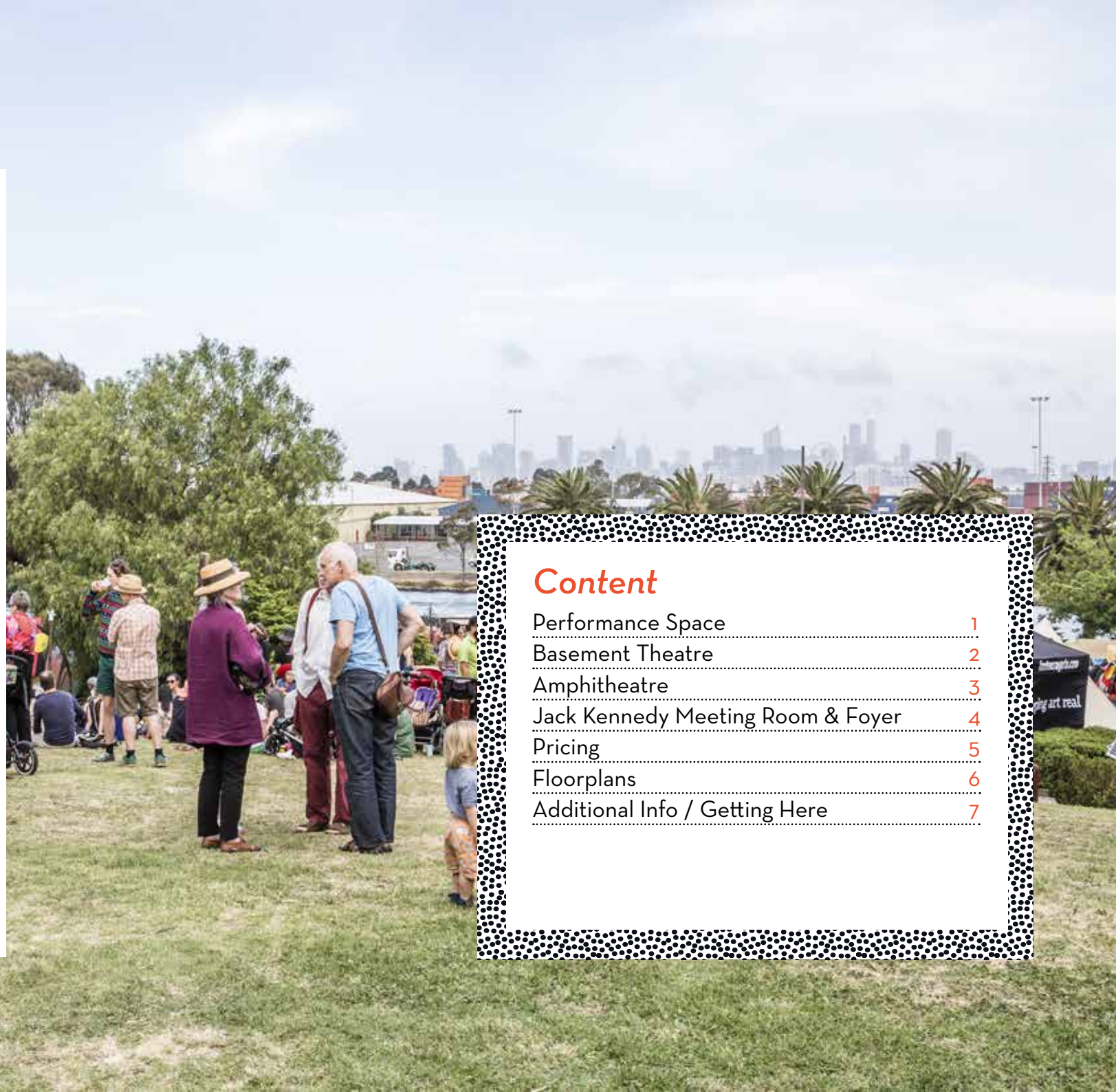
Footscray Community  
Arts Centre (FCAC)  
45 Moreland Street,  
Footscray VIC 3011  
P (03) 9362 8888  
F (03) 9362 8866  
E [reception@footscrayarts.com](mailto:reception@footscrayarts.com)

# Overview

Footscray Community Arts Centre is a highly versatile, multi-venue centre able to accommodate a wide range of events and activities from wedding ceremonies to conferences, rehearsals, performances, corporate events, birthdays, and more.

Conveniently located on the banks of the Maribyrnong river, and only a short walk away from the Footscray train station, FCAC stands as one of Melbourne West's most dynamic and charming venues.

**All profits from your venue hire at FCAC go towards supporting our work with communities in Melbourne's West. Make an impact with your next function!**



## Content

Performance Space	1
Basement Theatre	2
Amphitheatre	3
Jack Kennedy Meeting Room & Foyer	4
Pricing	5
Floorplans	6
Additional Info / Getting Here	7



## Performance Space

*The Performance Space is a stunning, contemporary space suitable for a variety of purposes including conferences, film screenings, rehearsals, performances, meetings, expos, corporate presentations, forums, trainings, and seminars.*

The venue contains a retractable raked seating bank. Seated capacity can be increased by adding rows of seats on the floor in front of the seating bank. The space has theatrical studio and lighting capabilities, as well as a mounted data projector and screen. The wooden floor is fully sprung, making it suitable for

dance and physical activities. The stained plywood walls are lined with sound absorbing black drapes which can cover all walls if desired. A small dressing room is directly attached to the space. This space is wheelchair accessible.

[See next page for specs](#)



*The Performance Space can accommodate more than 200 people seated (with the seating bank out) or 250 people standing. The space also opens to FCAC's foyer with a fully licensed bar.*

## Specs

### Dimensions

- 16.67m by 11.6m (with seating bank retracted)
- 9.5m x 11.6m (with seating bank extended)
- Equipment List
- The space is equipped with multiple power points and four 3-phase sockets

### Lighting

- 1 x ETC - ELE40 - 500 Element 40 Lighting Console 40 Faders
- 4 x Phillips Selecom Rama 150 Fresnel 7° to 50°
- 4 x SPX 15° - 35° Zoomspot fitted with GKV 600w lamp.
- 4 x ETC Seledor Vivid-R 2.5 LED Fixture 21 (color wash)
- 7 x ETC S4 LED Lustr+ Source Four LED Luminaire Zoom Lens
- Tube 15-30 degree 2 x Jands FP12 12 channel 2.4kW dimmer

### Audio

- Note audio below is an extra cost on top of the Venue Hire.
- Mixing Console
- 1 x Digidesign SC48 with standard plugin set.
- H-K Speaker system
- 4 x HK CT 112 (Powered by Yamaha P5000 amplifiers)
- 4 x HK PR:O 18 Sub A (Self powered)
- 4 x JBL Eon 15P (Self-powered)
- Microphones
- 1 x Shure Radio Mic SM58 Hand Held or Headset with Belt pack
- 4 x Shure SM58
- 1 x Shure SM57
- 1 x Shure PG58
- 2 x Behringer vocal microphone
- 2 x Passive DI

### Grid

- Fixed grid - 5.60 m 8 bars
- 8 patch points per bar (72 in total at grid and floor) 2 DMX
- patch points per bar and along wall
- 4 x 40amp 3-phase power
- Load bearing: 45kg per linear metre

### Scissor Lift

- Harlotte Optimum 8 electric scissor lift

### Seating Bank

- Acromate 174 seat manual retractable seating rank 23 seats required for technical operation
- Flooring & Drapes
- Fully sprung ply finish (flat black) Floor to ceiling black woolen drapes on runner on all 4 walls

### Projector

- Fixed position Mitsubishi WL6700U 3 LCD projector Fixed screen. (Can be hidden by drapes)

### Staging

- 6 x Ezi400 Ezi-Stage pieces. 1.8m x 2.4m @ 400 or 600mm Low pile black carpet
- 2 x Treads 2 step & skirt



# Basement Theatre

*A highly versatile space, the Basement Theatre can be used for meetings, presentations, trainings, parties, weddings, rehearsals, auditions, filming and more.*

Located in the lower level of historic Henderson House, the Basement Theatre is a large room with bluestone walls, wooden floors and river-facing windows. The adjoining lounge has toilet facilities and a small kitchenette containing a fridge, oven, stovetop, zip-boiler and microwave. The space can also be hired out along with the rehearsal & recording studio, located in the same building.

Fully licensed, the space can also be equipped and staffed as a bar.



## Specs

### Equipment

- Staging optional, Chairs & tables
- Lighting rig

### Capacity

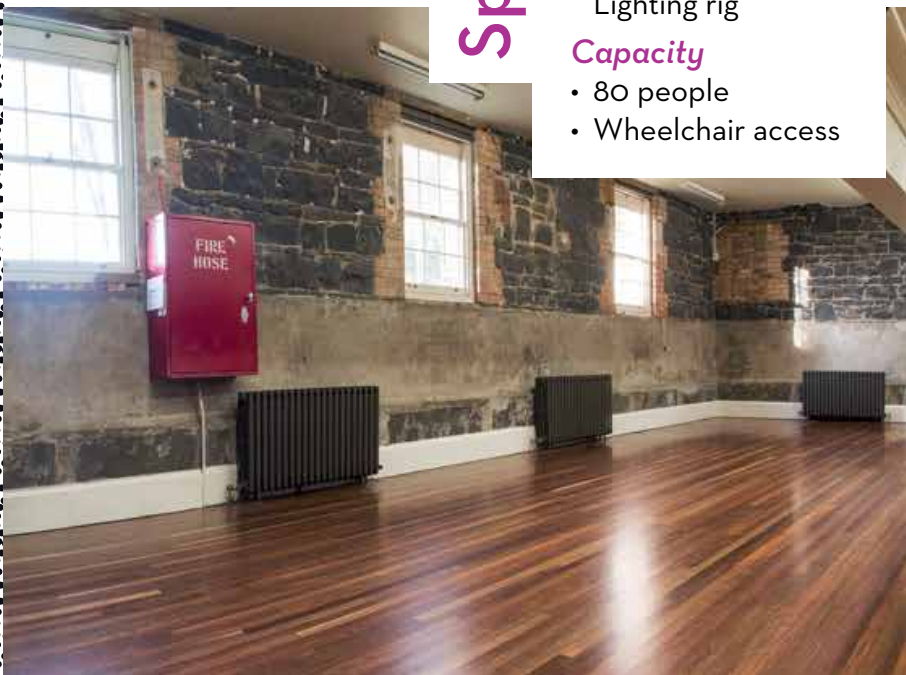
- 80 people
- Wheelchair access

### Power

- 1 x 3 - phase socket
- Multiple power points
- WiFi

### Dimensions

- 11.5m x 10.5m





# The Amphitheatre

*A gorgeous outdoor area with lush green grass and spectacular views of Melbourne's city skyline across the Maribyrnong River. Perfect for wedding ceremonies, kids' parties, corporate events, school functions and outdoor broadcasts, the Ampitheatre is a beautiful natural space with bluestone seating in the round.*

## Specs

### Equipment

- Space for a stage to be brought in

### Power

- Standard sockets
- 3 - phase

### Capacity

- 250+



Courtesy of Tim Stitz

# Jack Kennedy Meeting Room

*A versatile and light-filled room, the Jack Kennedy Meeting Room is an ideal space for meetings, interviews, presentation, training and smaller functions.*

One wall of the meeting room can be removed, connecting to the FCAC foyer area and Roslyn Smorgon Gallery. This opens up the space making it suitable for larger functions of 150 people or more (standing) including a bar setup.



## Equipment

- Data projector
- Whiteboard
- Chairs & tables
- Lighting rig

## Capacity

- 25 people / 150+ when opened to the lobby
- Wheelchair access

## Power

- Multiple power points
- WiFi

## Dimensions

- 8m x 6m

**Specs**

Venue	Individual NFP & Community Organisations rate		Corporate rate	
	Per hour	Full day	Per hour	Full day
Performance Space ONLY	N/A	990	N/A	1485
• with seating bank	N/A	1410	N/A	1905
Jack Kennedy Meeting Room	60	360	90	540
• with Foyer space	120	720	180	1080
ArtLife Studio	60	360	90	540
Visual Arts Studio	30	180	45	270
Digital Arts Studio	N/A	N/A	N/A	660
Basement Theatre & Lounge	95	570	143	855
Amphitheatre	Please enquire. Prices may vary depending on intended use and equipment needs.			

# Pricing

The **orange** cases indicate an hourly rate.

These prices do not include staffing costs. For a full quote please contact our **Events Coordinator** at [bigoa@footscrayarts.com](mailto:bigoa@footscrayarts.com).

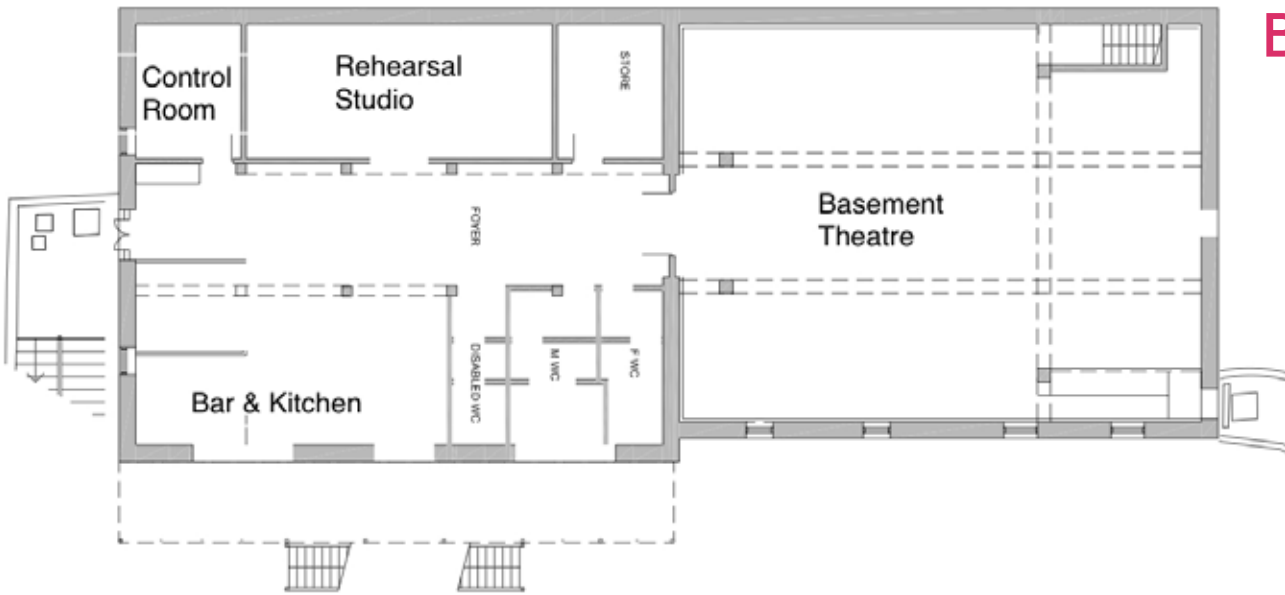
**Note:** the price of the Performance Space includes a technician fee to set up the space.

**Note:** prices do not include GST.

**Note:** Minimum hire of 3 hours for all spaces.

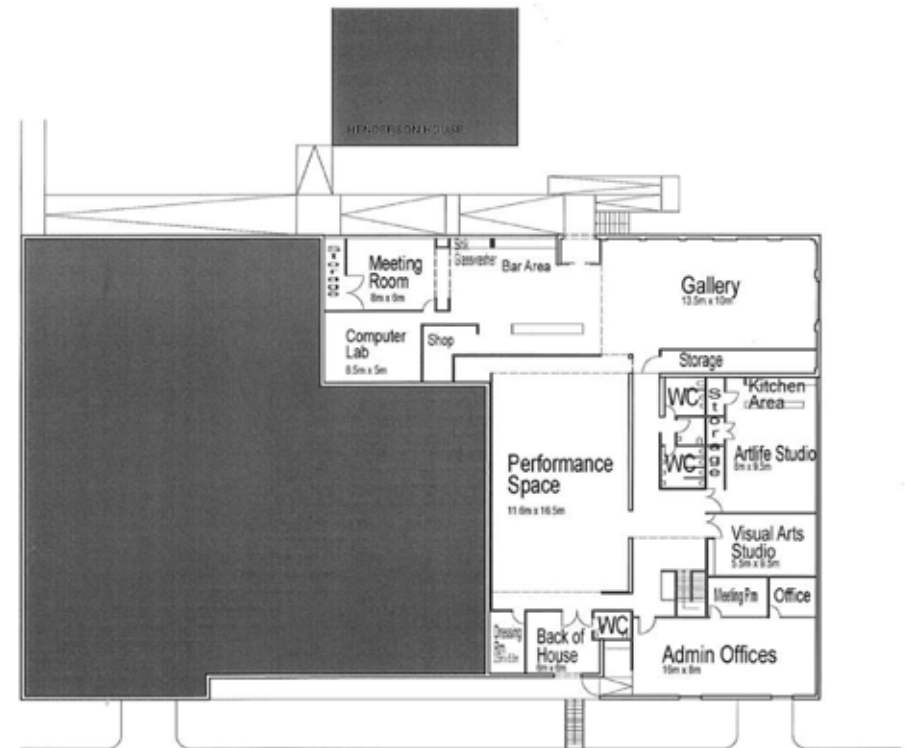


# Floor Plans



## Basement Theatre

# Warehouse Plans



# Additional Information

## Staffing

We work with a dedicated team of technicians, sound engineers, event managers and bartenders who can ensure the best possible outcome for your event. Please talk with our Events Coordinator to check staffing requirements for your next event!

## Liquor Licensing

Footscray Community Arts Centre holds a liquor license for all its indoor spaces and manages all bar related activities (staffing, stocking and selling of alcohol). If you are interested in having a bar set-up for your next event please enquire.

## Bar Offer

Our bar currently stocks 'Two Birds' beers and 'The Hills' ciders as well as a selection of wines from 'CAKE' including Pinot Noir, Shiraz, Sauvignon Blanc and Pinot Gris. Soft drinks from 'CAPI' and house-made mulled wine for the winter season! A selection of sweet and savoury snacks is also available.

## Catering

FCAC does not offer catering services in-house. To arrange catering for your event, talk with our preferred suppliers:

**ASRC Catering:** [www.catering.asrc.org.au](http://www.catering.asrc.org.au)

**Happy River:** 03 9689 3244

## Contact details

To make a booking, come for a site visit or get a more precise quote, please contact [bigoa@footscrayarts.com](mailto:bigoa@footscrayarts.com) or call us on **03 9362 8811**.

## Getting Here

Footscray Community Arts Centre is located on 45 Moreland Street, Footscray VIC 3011.

### Public Transport

**Train:** Catch a train to Footscray Station and take a 5 minute walk down Bunbury Street. **Bus:** Take the 402 bus to the corner of Moreland Street and Dynon Road, and then a 5-minute walk down Moreland Street.

### Parking

There are two hour unmetered car-parks in FCAC's front car park and metered parking on Moreland Street.

### Cycling/Walking

Cycle or walk along the Maribyrnong River and enter FCAC via Riverside Lawn.

