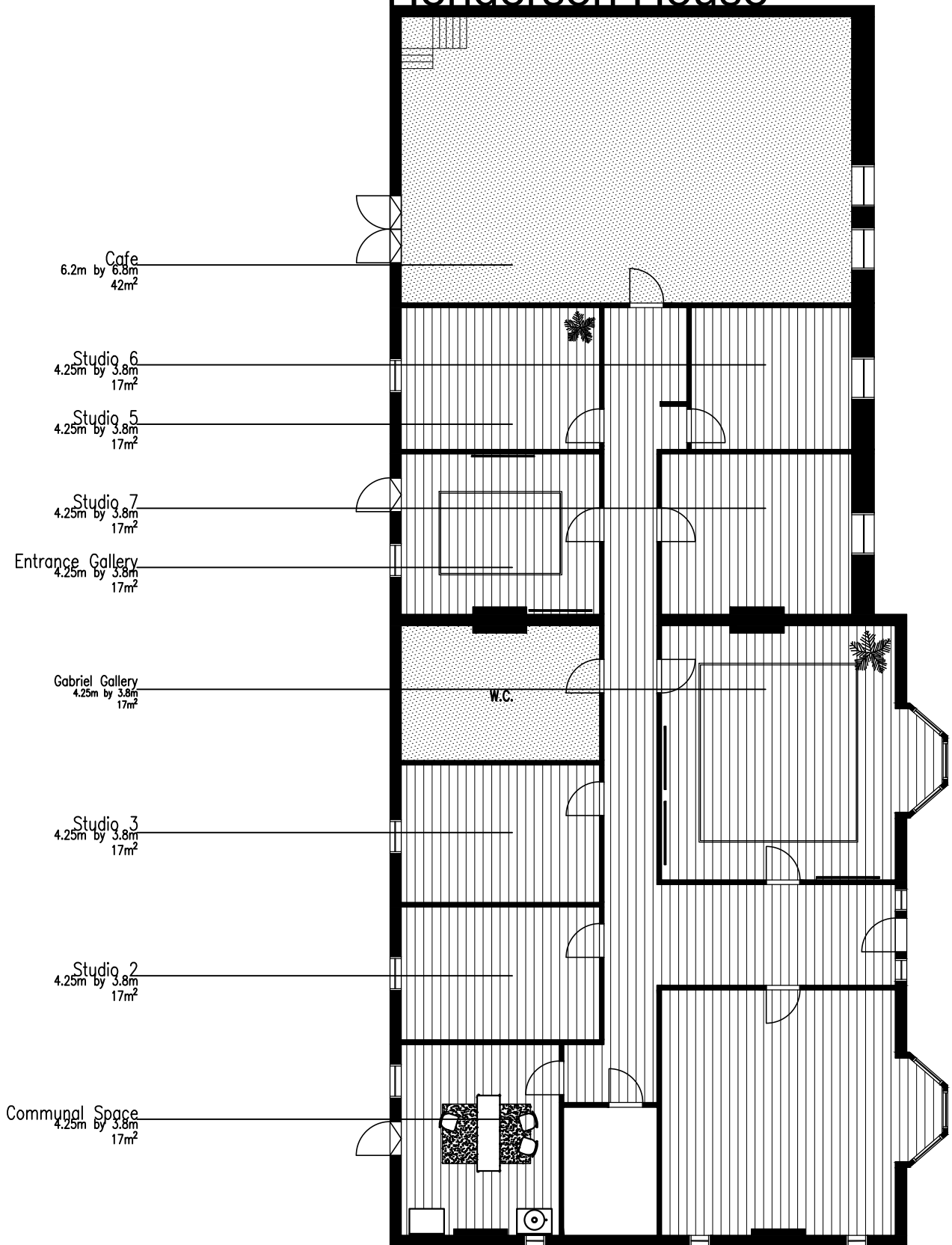


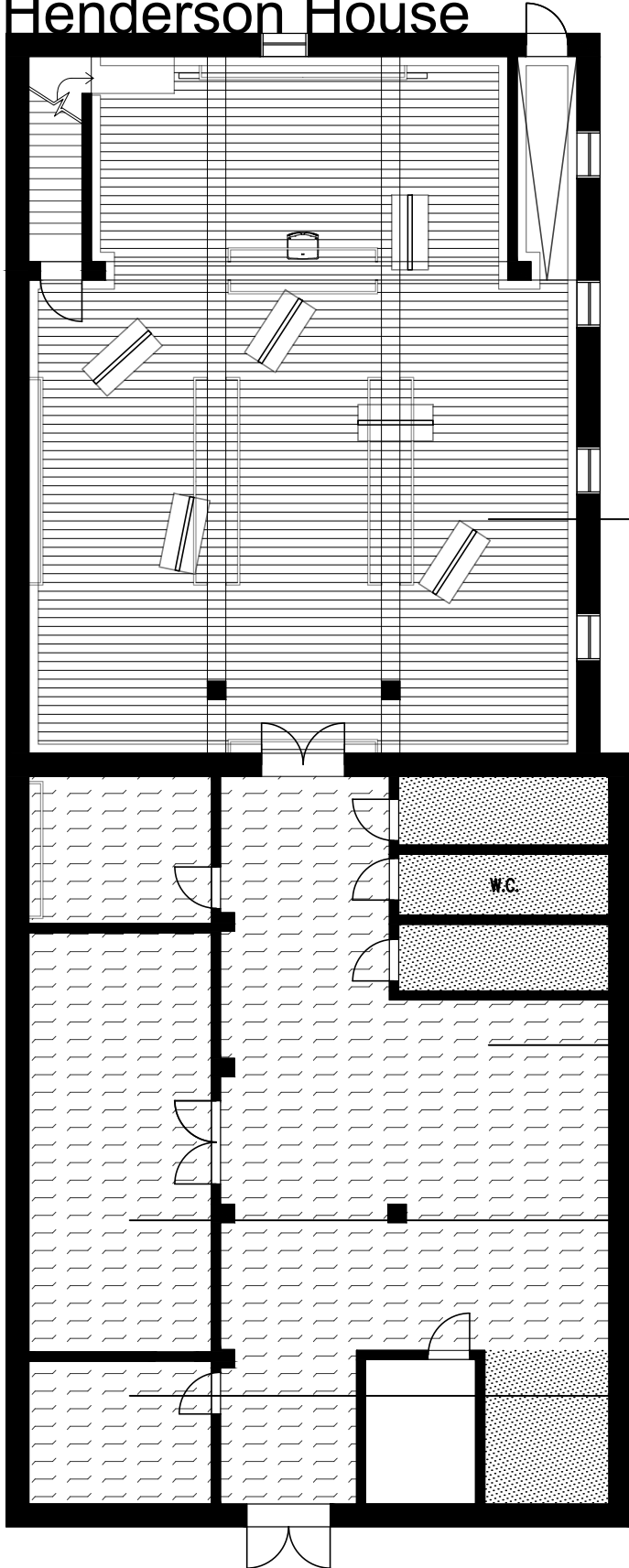
Ground Floor

Henderson House



Basement

Henderson House



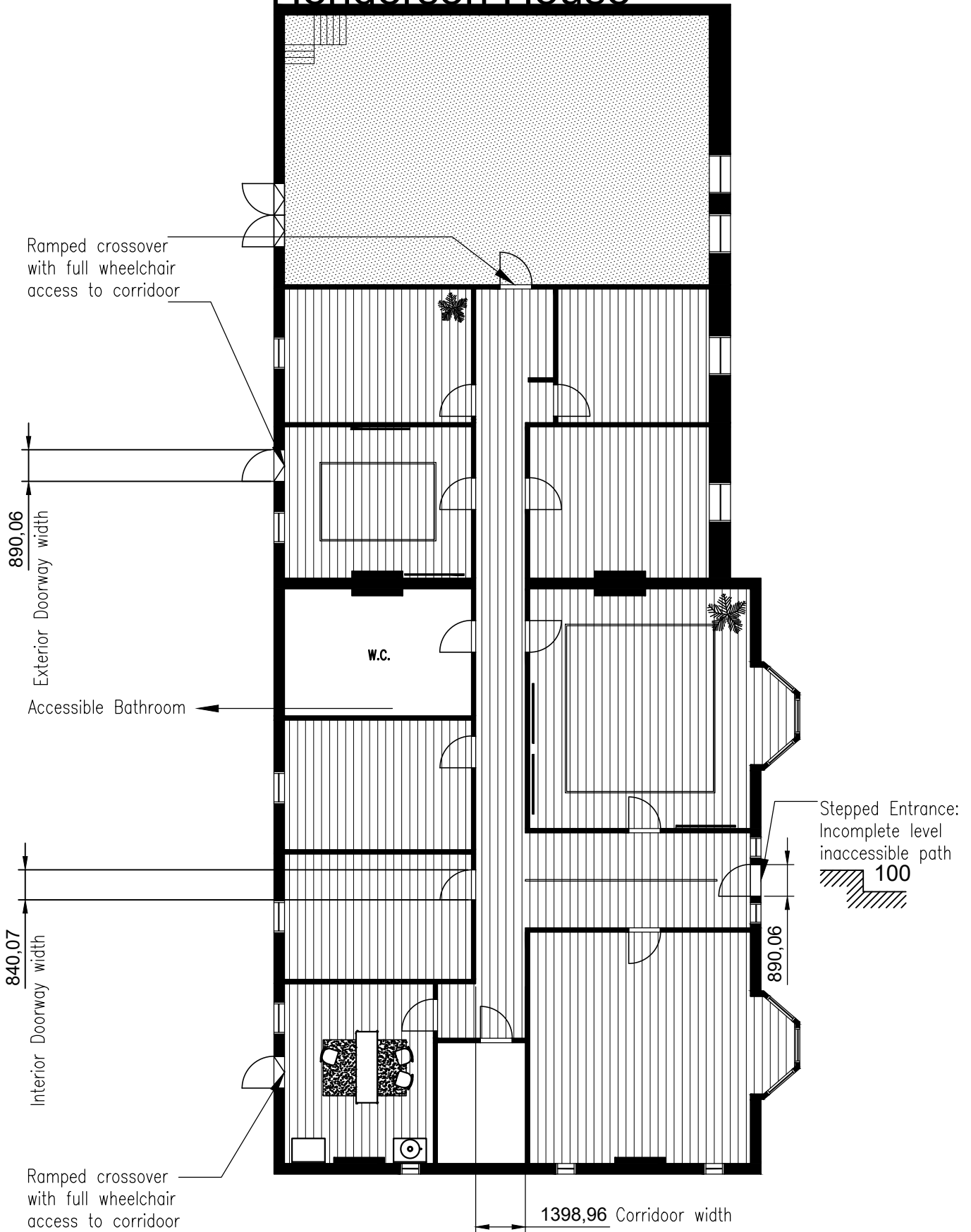
Basement Theatre
4.25m by 3.8m
17m²

Foyer
4.25m by 3.8m
17m²

Green Room
4.25m by 3.8m
17m²

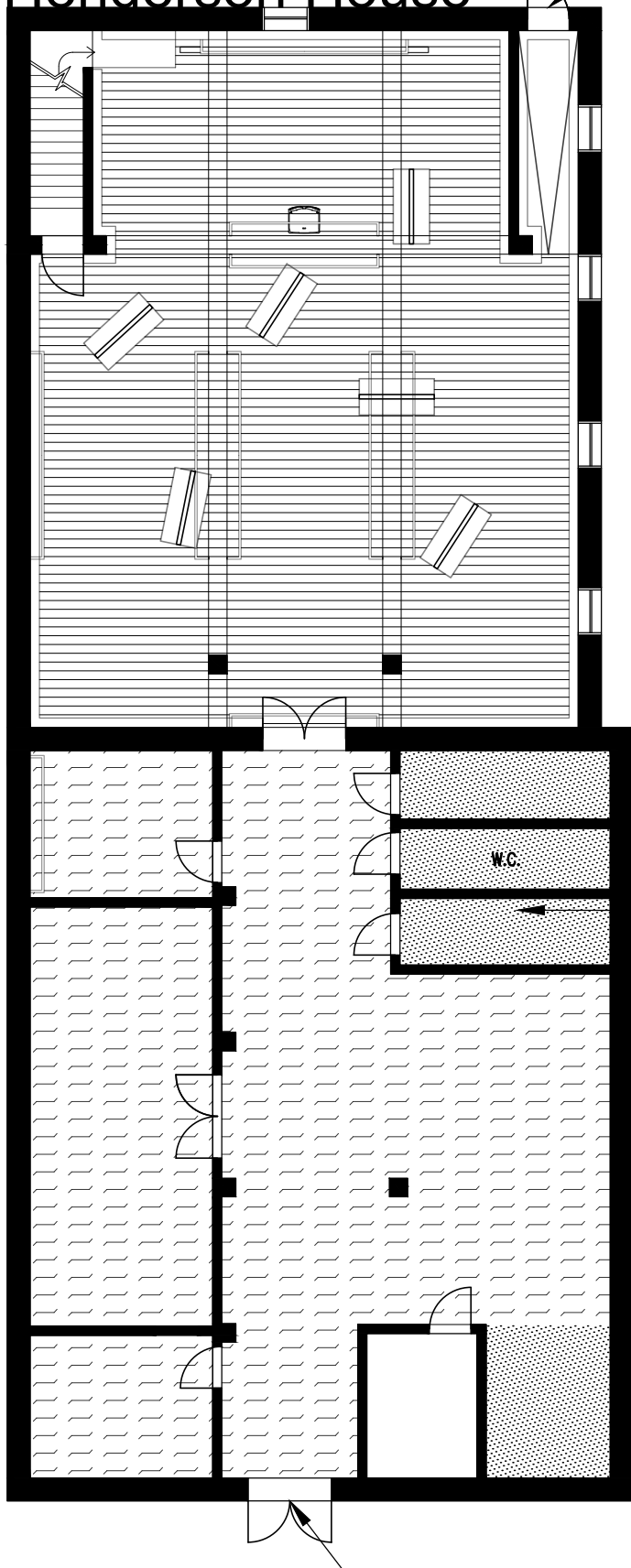
Podcast Studio
4.25m by 3.8m
17m²

Accessibility Ground Floor Henderson House



Accessibility Basement Henderson House

Ramped crossover
with full wheelchair
access to corridor



Accessible Bathroom

Stepped Entrance:
Incomplete level
inaccessible path

